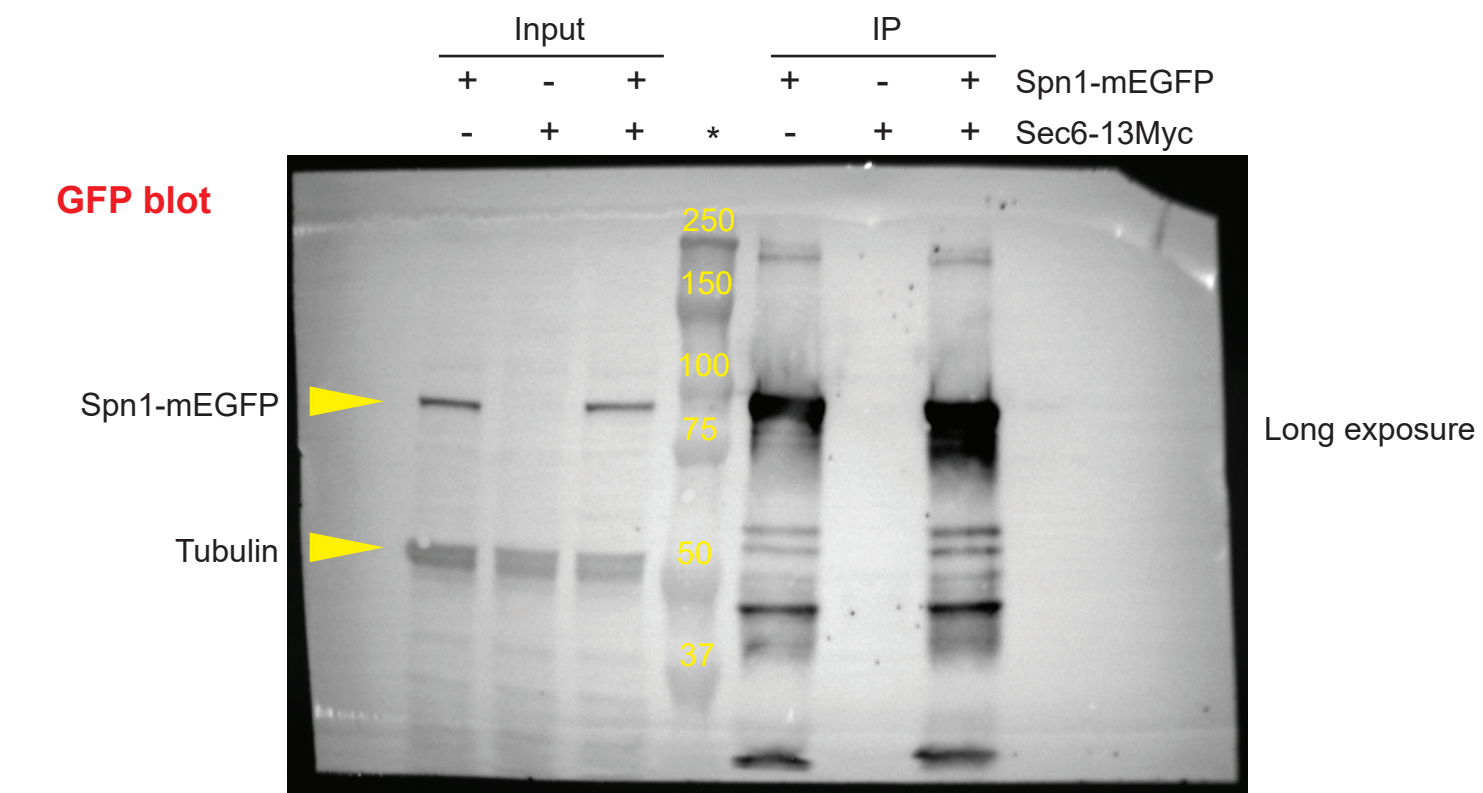
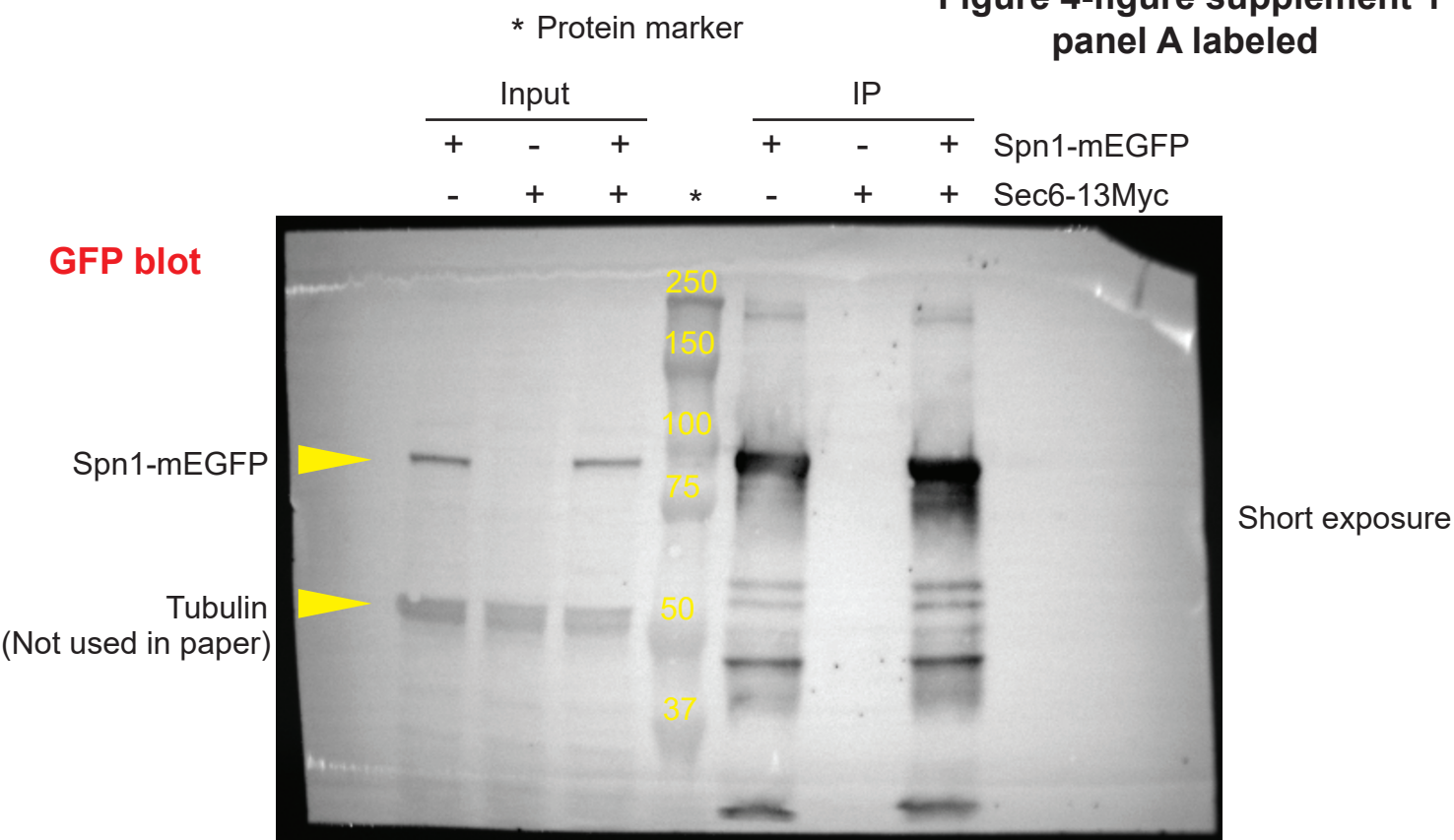


Figure 4-figure supplement 1
panel A labeled



Note: White illumination near the edges of the blots are unwanted reflection of liquid from membrane and does not appear in chemiluminisence channel.

Figure 4-figure supplement 1
panel A labeled

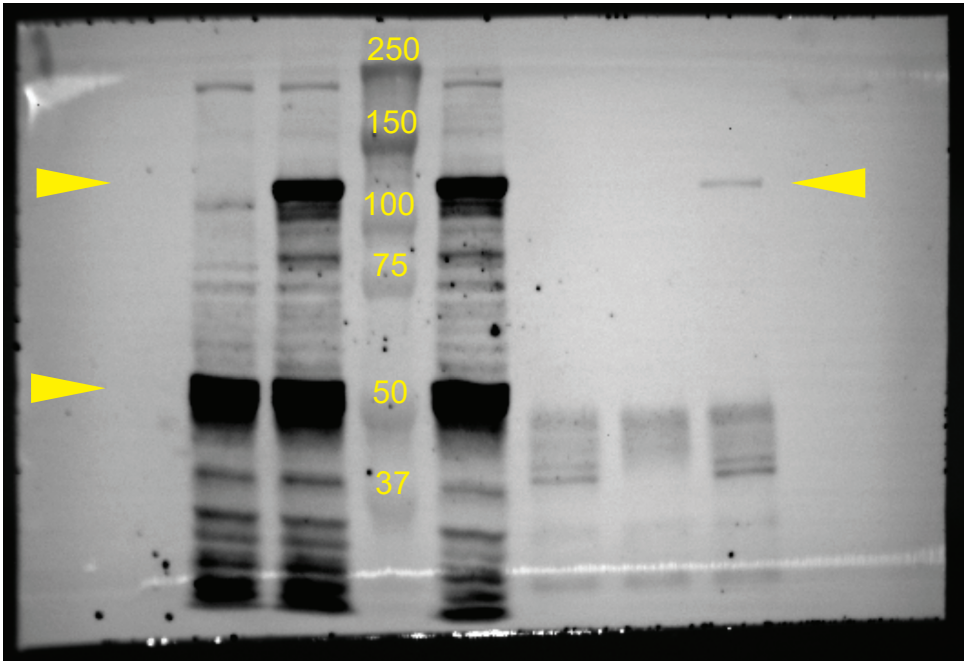
* Protein marker

Input				IP			
+	-		+	+	-	+	Spn1-mEGFP
-	+	*	+	-	+	+	Sec6-13Myc

Myc blot

Sec6-13Myc

Tubulin
(Not used in paper)



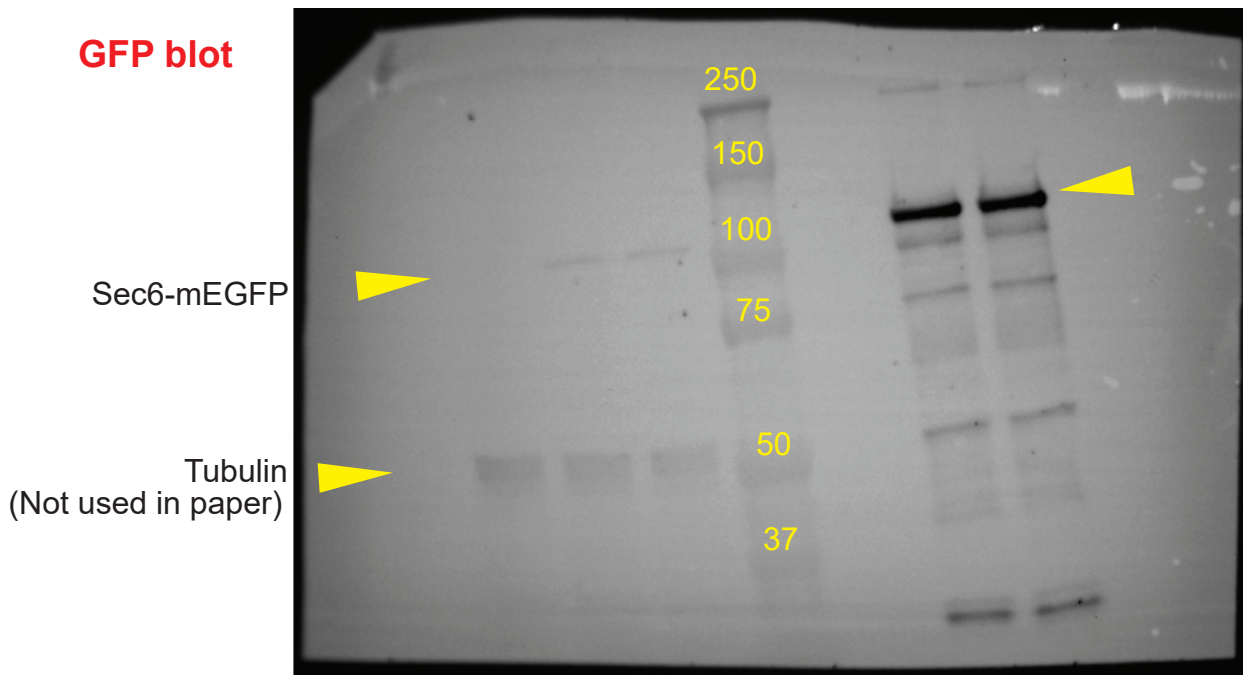
Note: White illumination near the edges of the blots are unwanted reflection of liquid from membrane and does not appear in chemiluminisence channel.

**Figure 4-figure supplement 1
panel B labeled**

* Protein marker

Input				IP			
+	-	+		+	-	+	Spn1-13Myc
-	+	+	*	-	+	+	Sec6-mEGFP

GFP blot

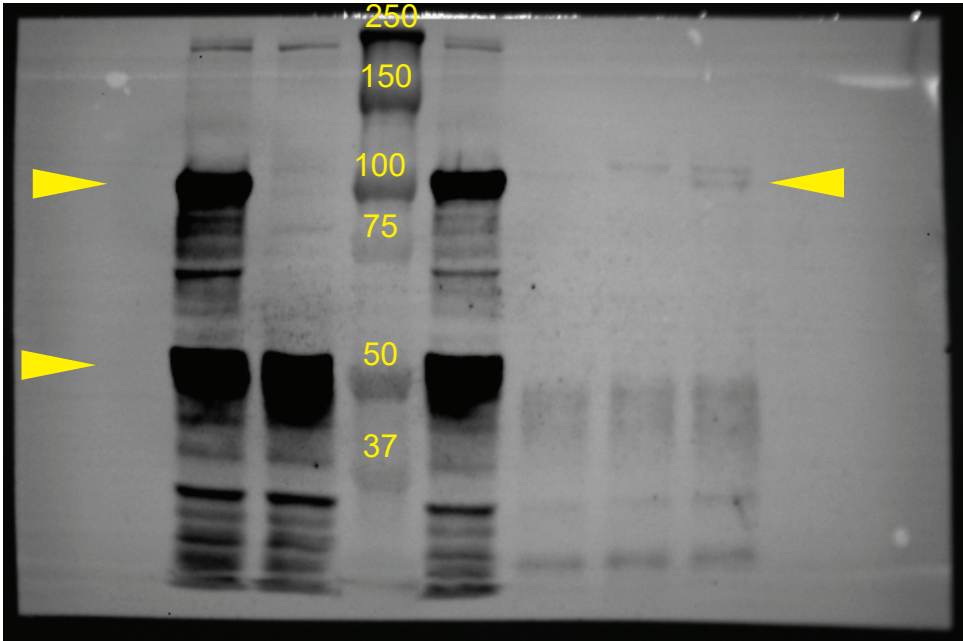


Note: White illumination near the edges of the blots are unwanted reflection of liquid from membrane and does not appear in chemiluminisence channel.

Figure 4-figure supplement 1
panel B labeled

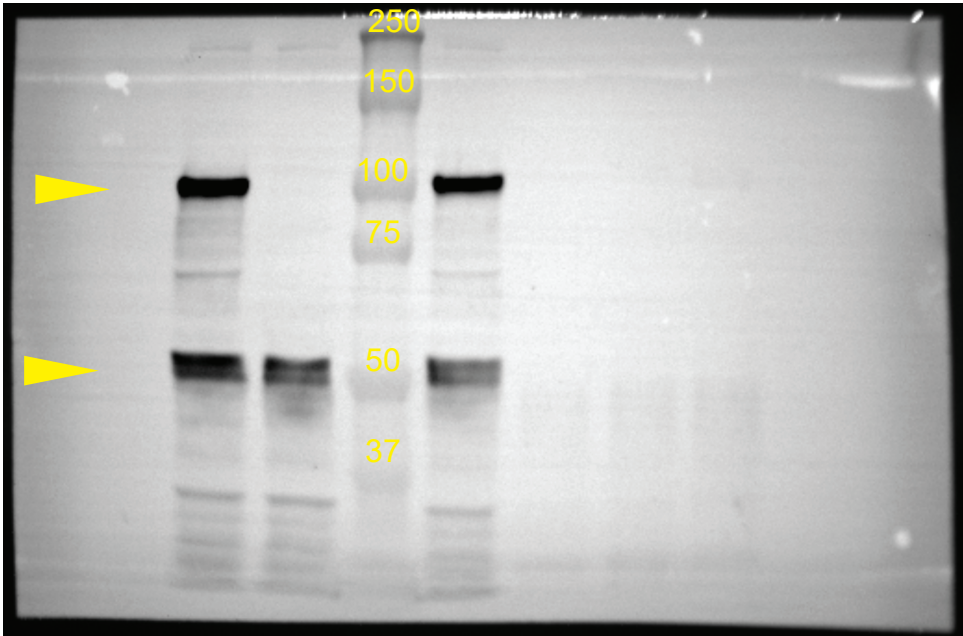
* Protein marker				Input			IP			
				+	-	+	+	-	+	Spn1-13Myc
				-	+	*	+	-	+	Sec6-mEGFP

Myc blot



				Input			IP			
				+	-	+	+	-	+	Spn1-13Myc
				-	+	*	+	-	+	Sec6-mEGFP

Myc blot



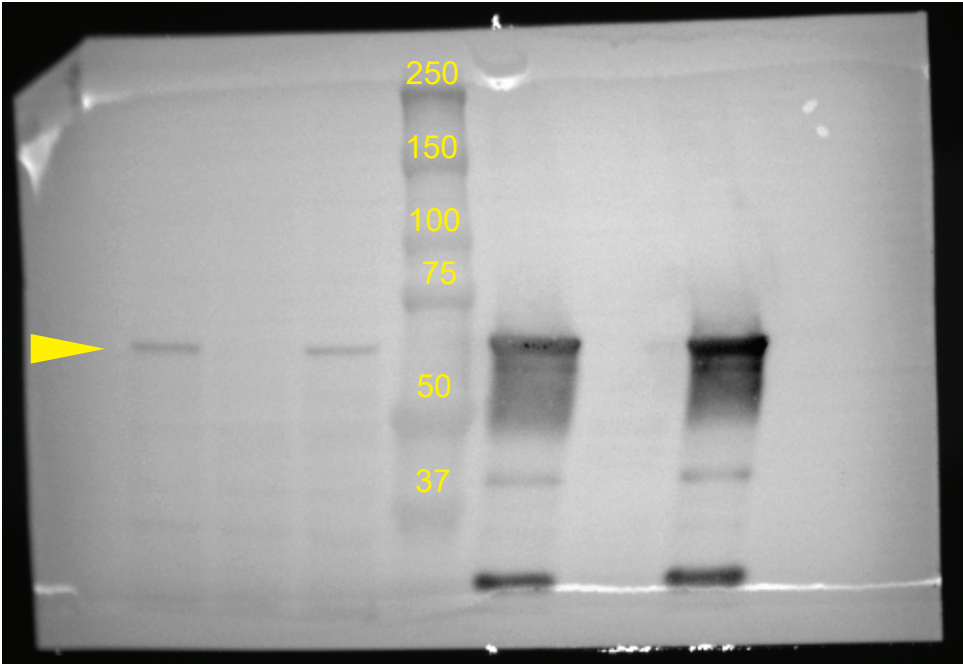
Note: White illumination near the edges of the blots are unwanted reflection of liquid from membrane and does not appear in chemiluminisence channel.

Figure 4-figure supplement 1
panel C labeled

* Protein marker							
Input				IP			
+	-	+		+	-	+	Spn2-mEGFP
-	+	+	*	-	+	+	Sec5-13Myc

GFP blot

Spn2-mEGFP



Note: White illumination near the edges of the blots are unwanted reflection of liquid from membrane and does not appear in chemiluminisence channel.

**Figure 4-figure supplement 1
panel C labeled**

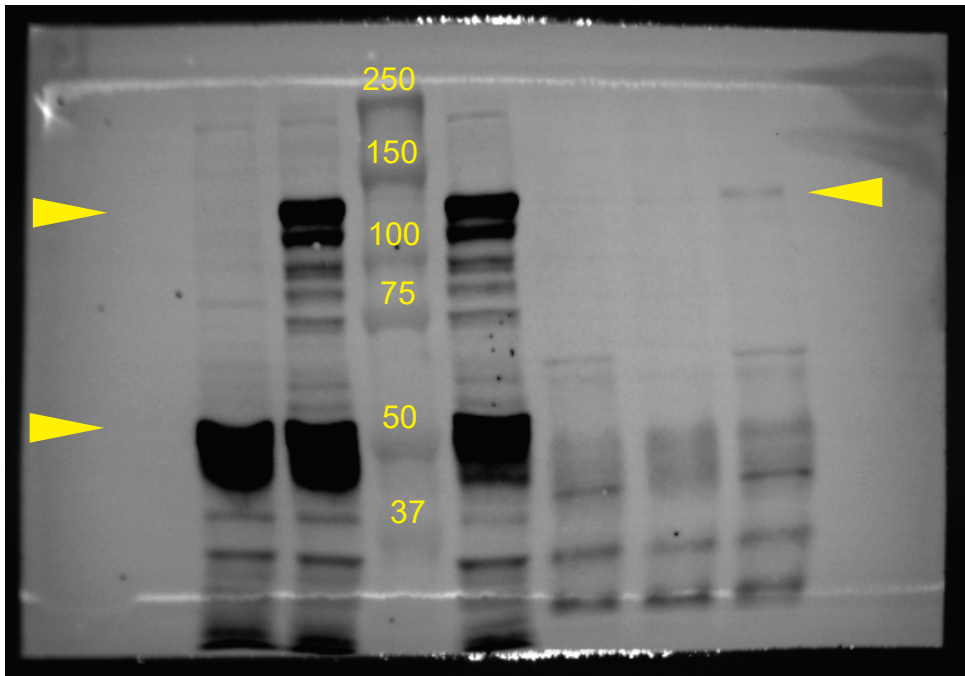
* Protein marker

Input				IP			
+	-		+	+	-	+	Spn2-mEGFP
-	+	*	+	-	+	+	Sec5-13Myc

Myc blot

Sec5-13Myc

Tubulin
(Not used in paper)



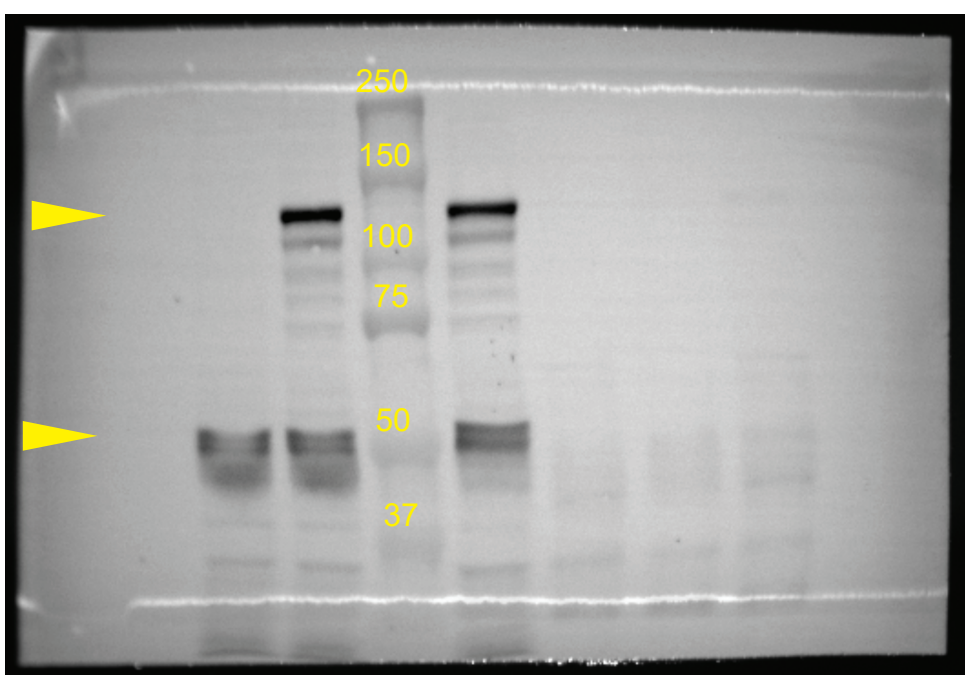
Long exposure

Input				IP			
+	-		+	+	-	+	Spn2-mEGFP
-	+	*	+	-	+	+	Sec5-13Myc

Myc blot

Sec5-13Myc

Tubulin



Short exposure

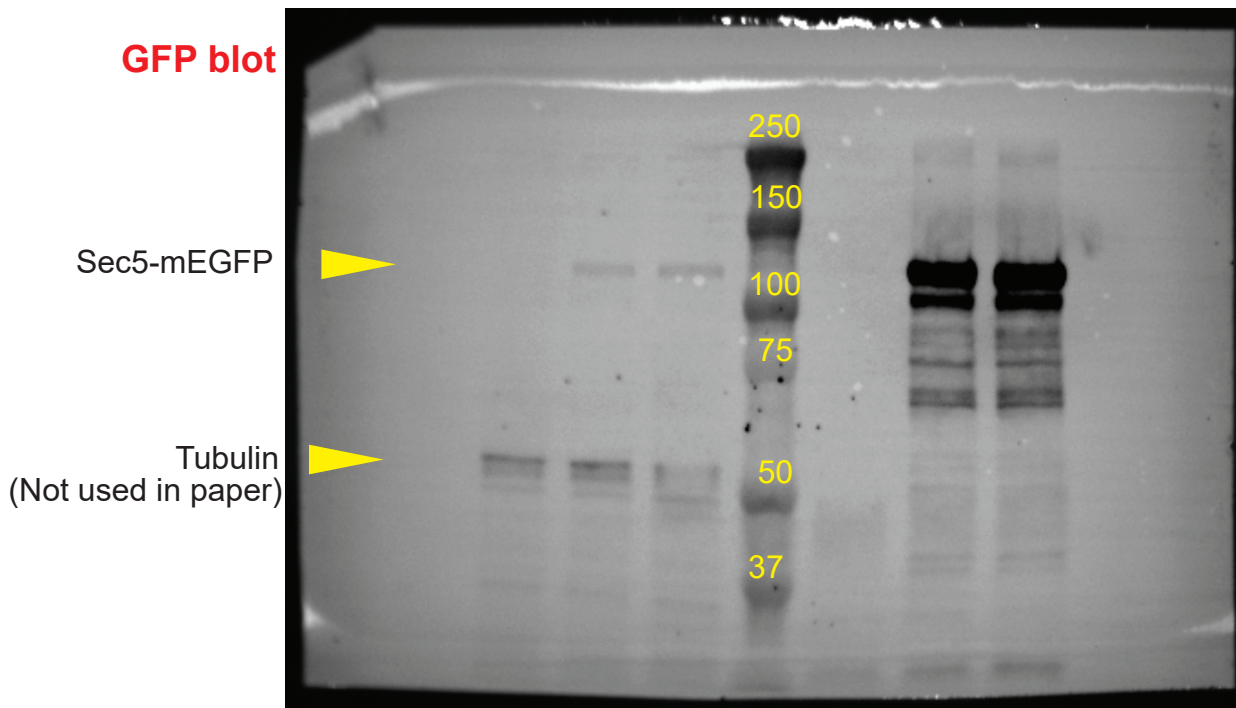
Note: White illumination near the edges of the blots are unwanted reflection of liquid from membrane and does not appear in chemiluminescence channel.

Figure 4-figure supplement 1
panel D labeled

* Protein marker

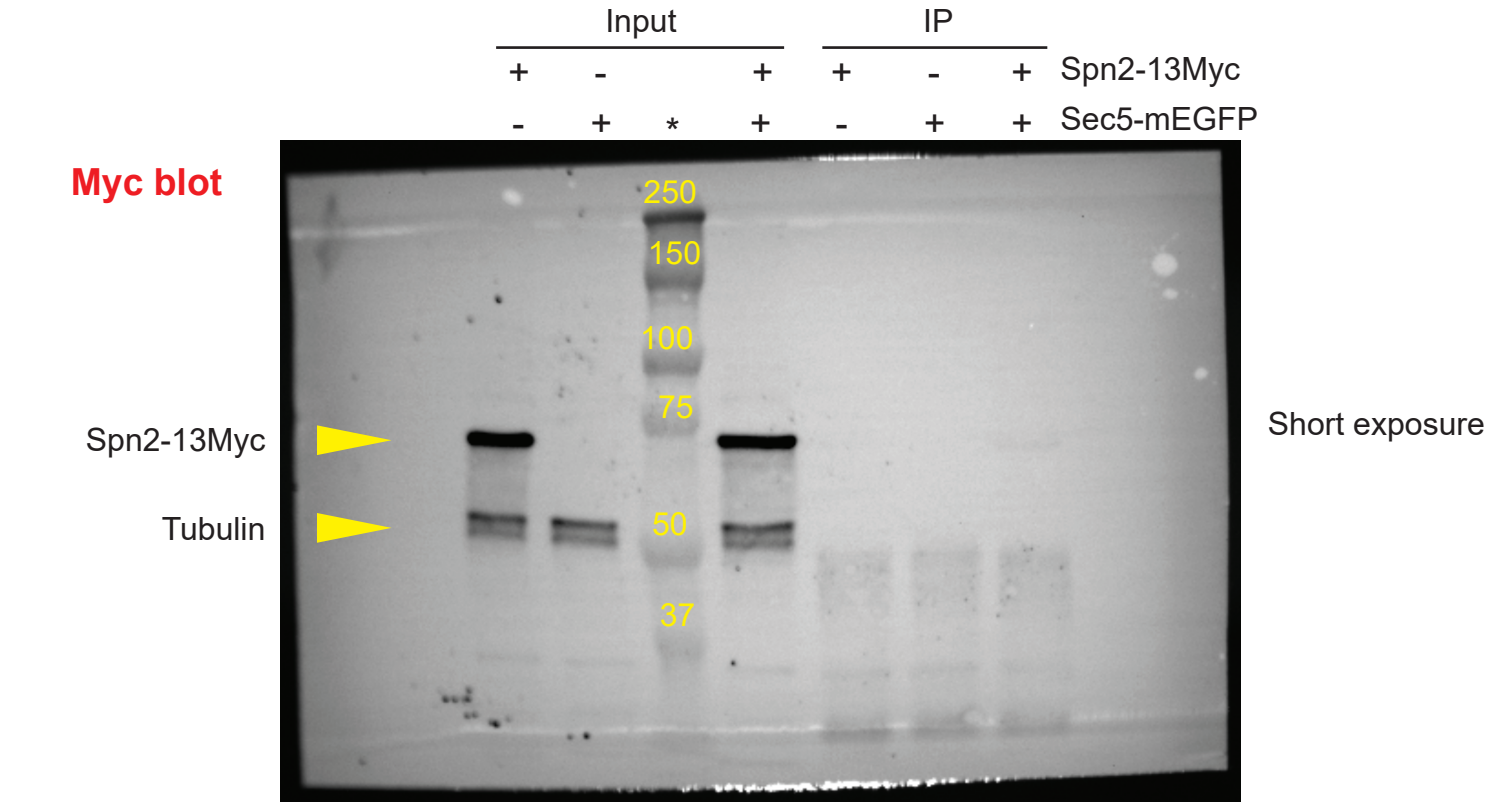
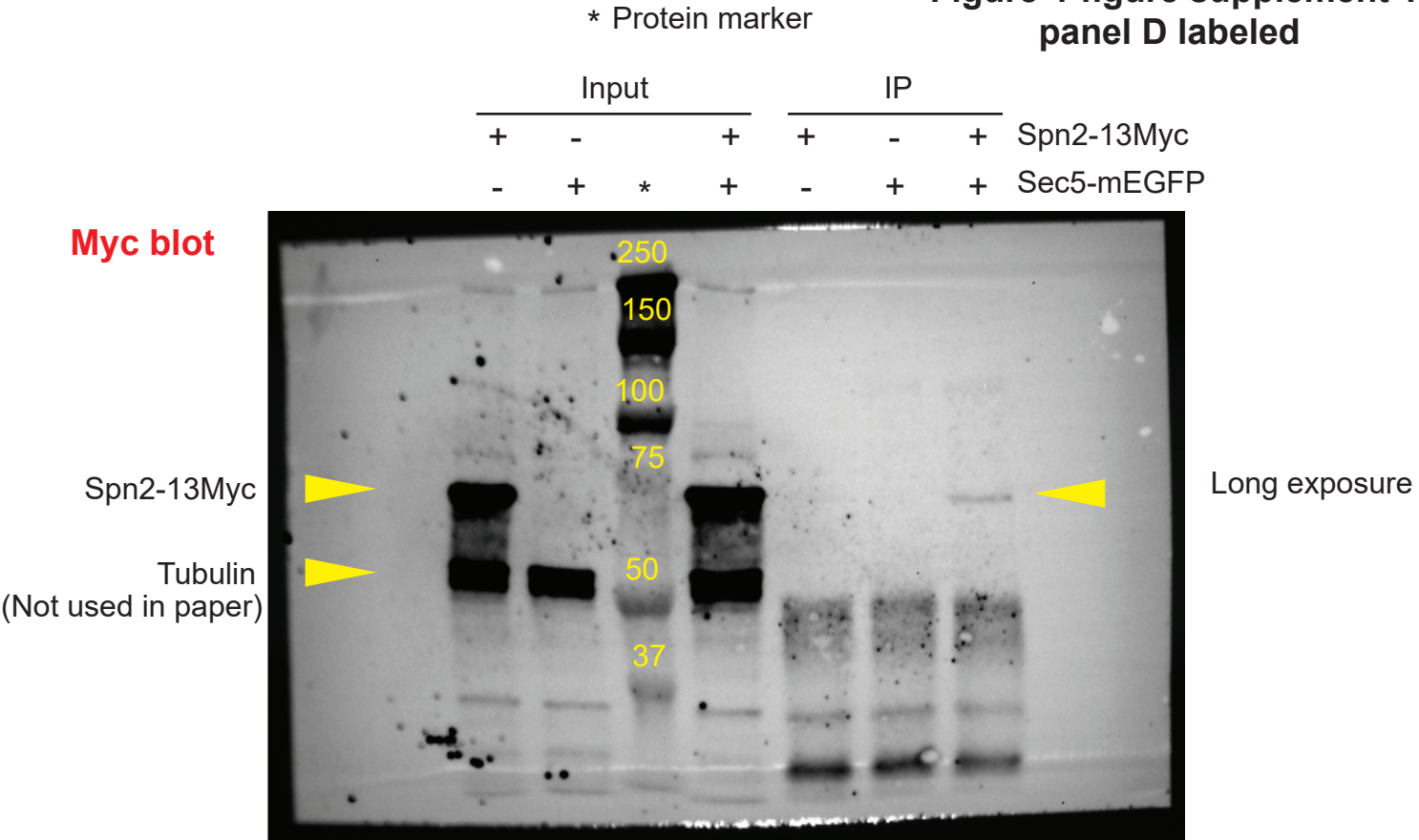
Input				IP			
+	-	+		+	-	+	Spn2-13Myc
-	+	+	*	-	+	+	Sec5-mEGFP

GFP blot



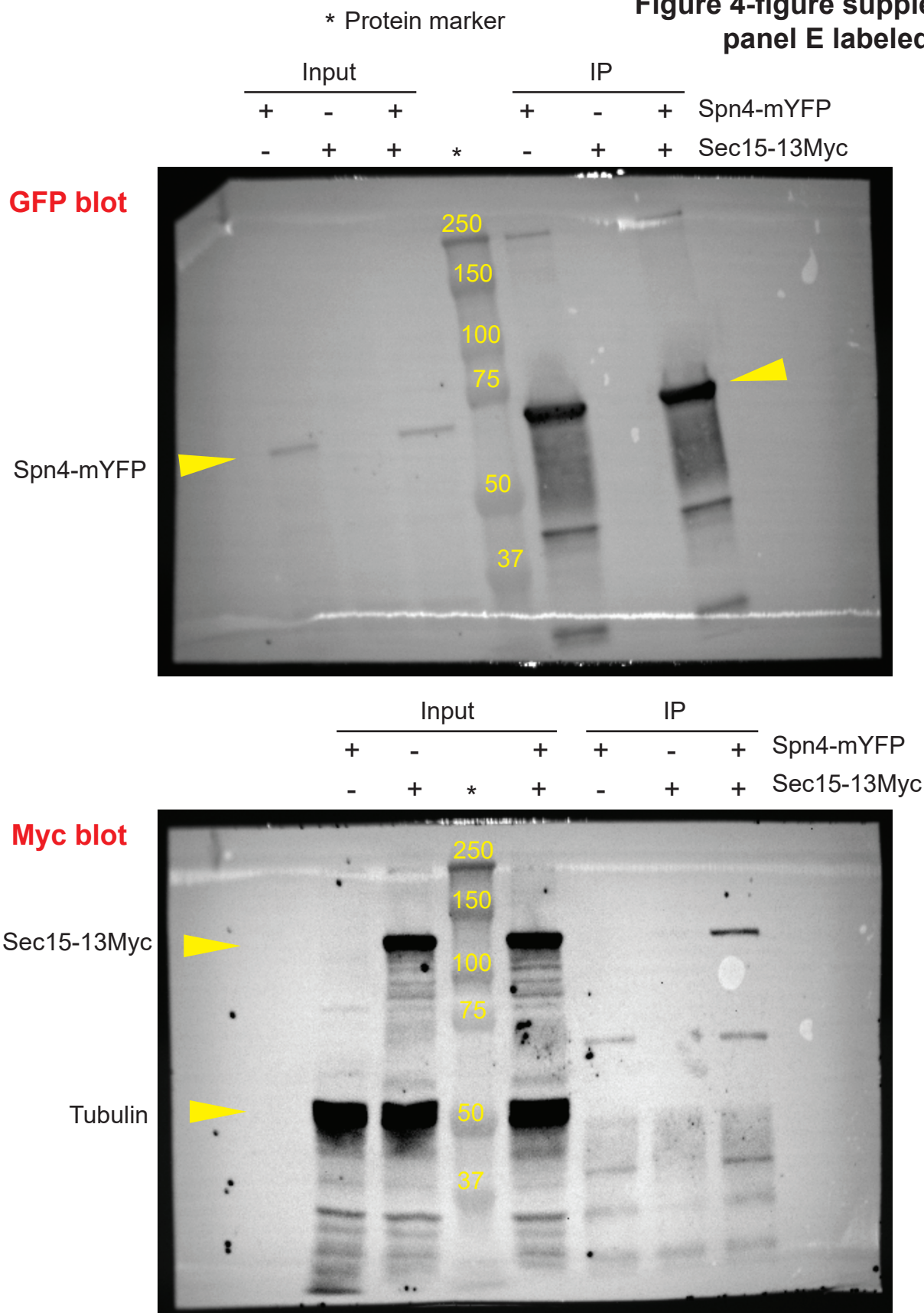
Note: White illumination near the edges of the blots are unwanted reflection of liquid from membrane and does not appear in chemiluminisence channel.

Figure 4-figure supplement 1
panel D labeled



Note: White illumination near the edges of the blots are unwanted reflection of liquid from membrane and does not appear in chemiluminisence channel.

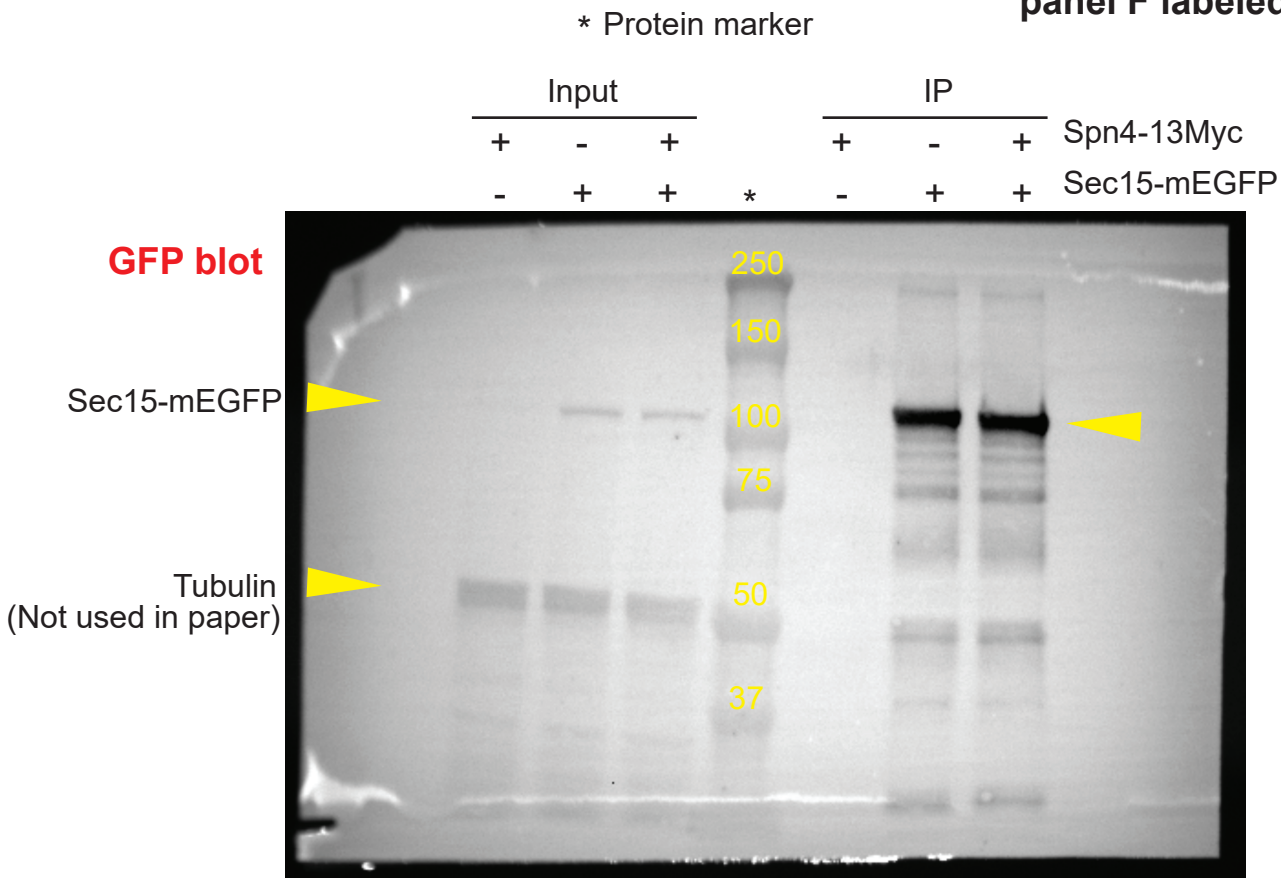
**Figure 4-figure supplement 1
panel E labeled**



Note: White illumination near the edges of the blots are unwanted reflection of liquid from membrane and does not appear in chemiluminescence channel.

Note: Contrast was adjusted to see tubulin bands clearly from same Myc blot for the original figure in paper.

Figure 4-figure supplement 1
panel F labeled



Note: White illumination near the edges of the blots are unwanted reflection of liquid from membrane and does not appear in chemiluminisence channel.

**Figure 4-figure supplement 1
panel F labeled**

* Protein marker

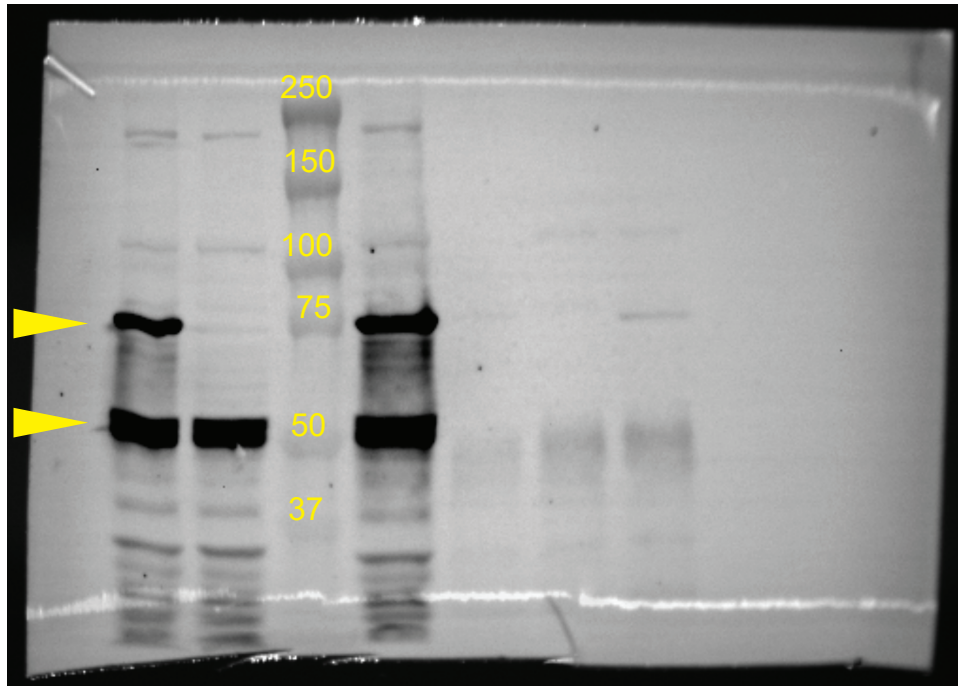
Input

IP

+	-		+	+	-	+	Spn4-13Myc
-	+	*	+	-	+	+	Sec15-mEGFP

Myc blot

Spn4-13Myc
Tubulin
(Not used in paper)



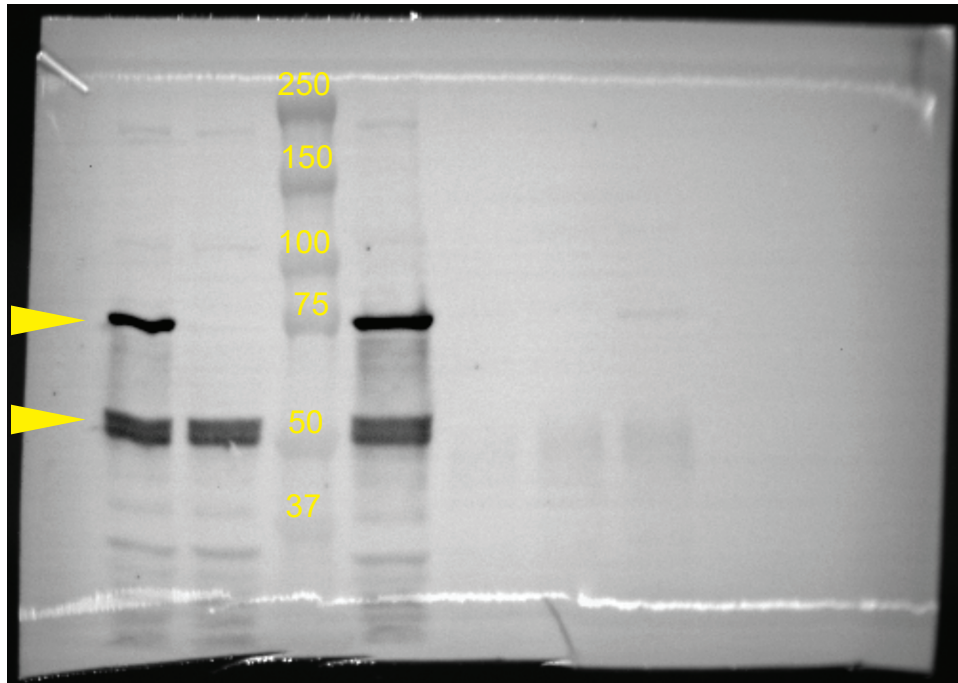
Input

IP

+	-		+	+	-	+	Spn4-13Myc
-	+	*	+	-	+	+	Sec15-mEGFP

Myc blot

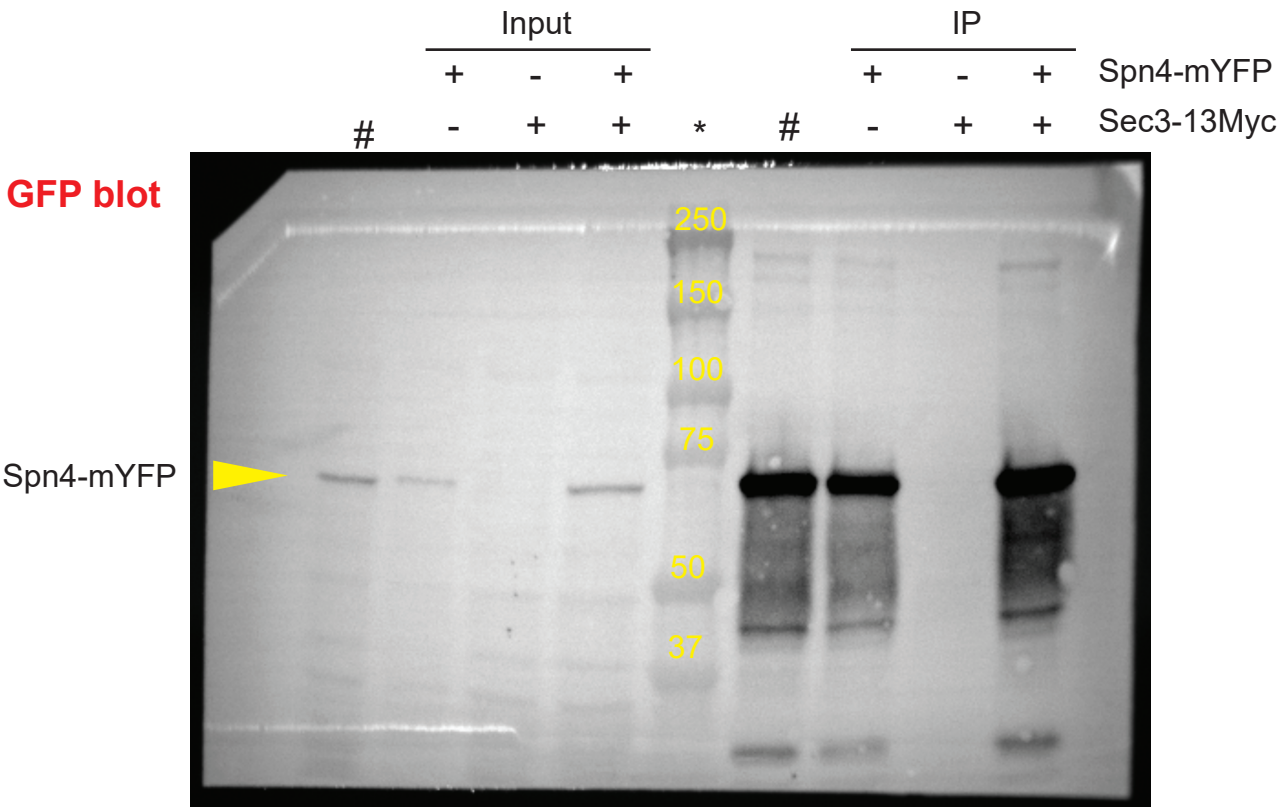
Spn4-13Myc
Tubulin



Note: White illumination near the edges of the blots are unwanted reflection of liquid from membrane and does not appear in chemiluminescence channel.

Figure 4-figure supplement 1
panel G labeled

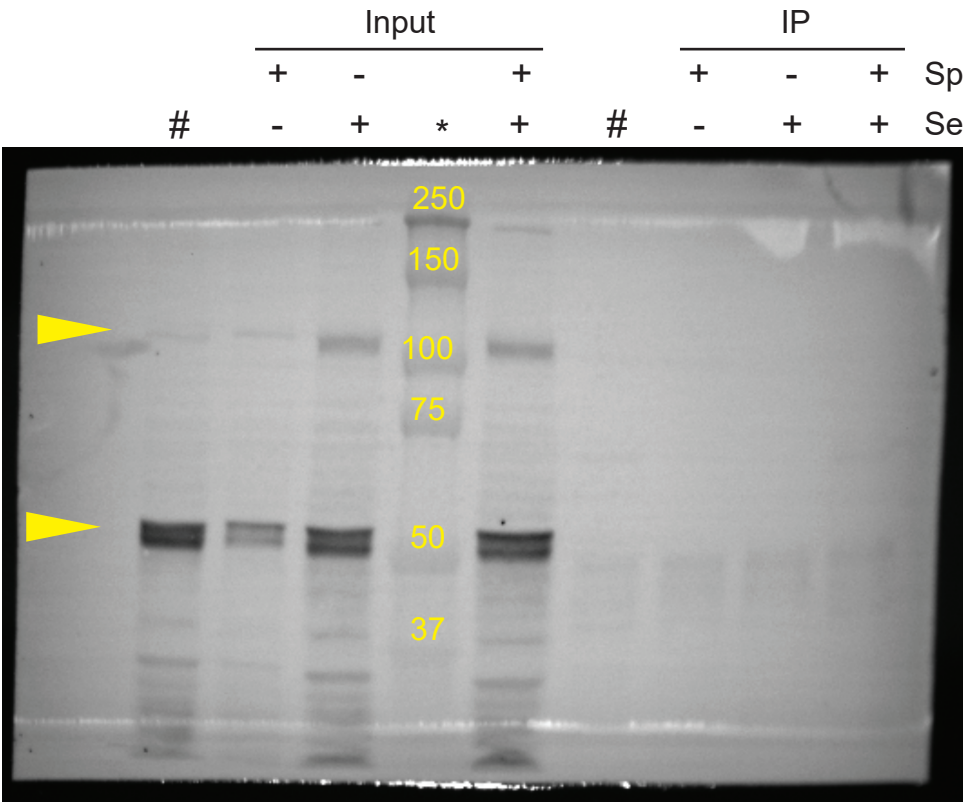
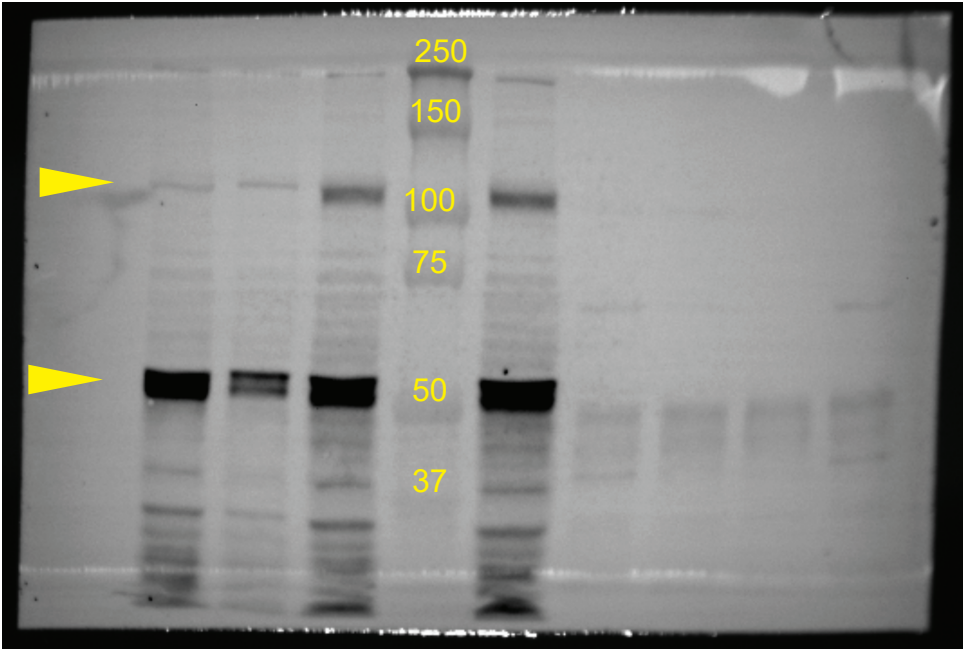
* Protein marker # Irrelevant lane



Note: White illumination near the edges of the blots are unwanted reflection of liquid from membrane and does not appear in chemiluminisence channel.

Figure 4-figure supplement 1
panel G labeled

* Protein marker	# Irrelevant lane							
	Input				IP			
	+	-		+	+	-	+	Spn4-mYFP
#	-	+	*	+	#	-	+	Sec3-13Myc



Note: White illumination near the edges of the blots are unwanted reflection of liquid from membrane and does not appear in chemiluminisence channel.

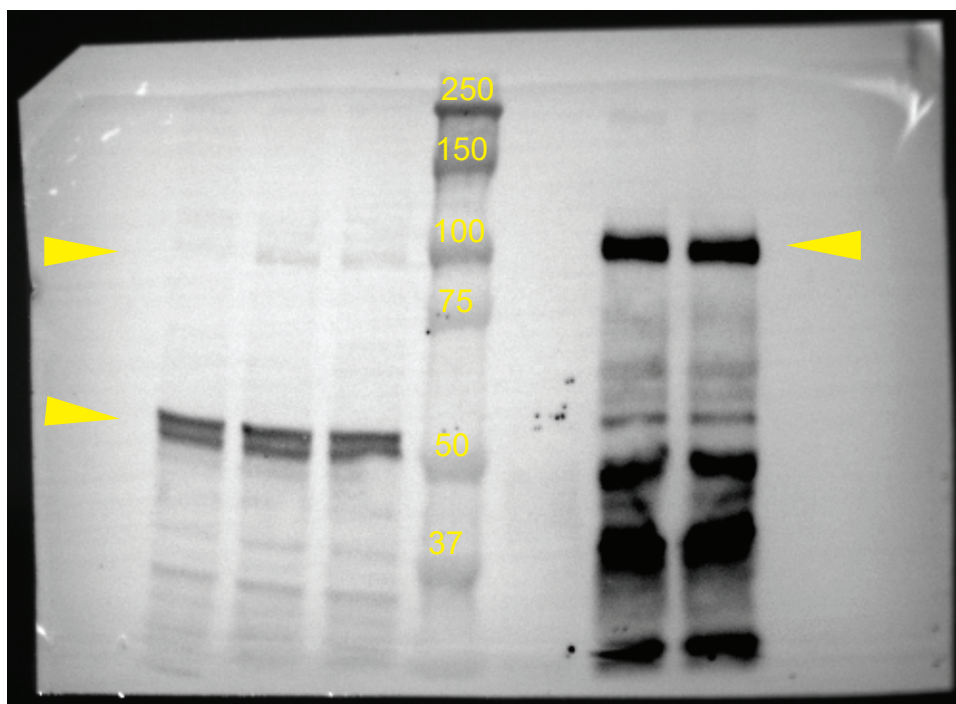
**Figure 4-figure supplement 1
panel H labeled**

* Protein marker

Input				IP			
+	-	+		+	-	+	Spn4-13Myc
-	+	+	*	-	+	+	Sec3-GFP

GFP blot

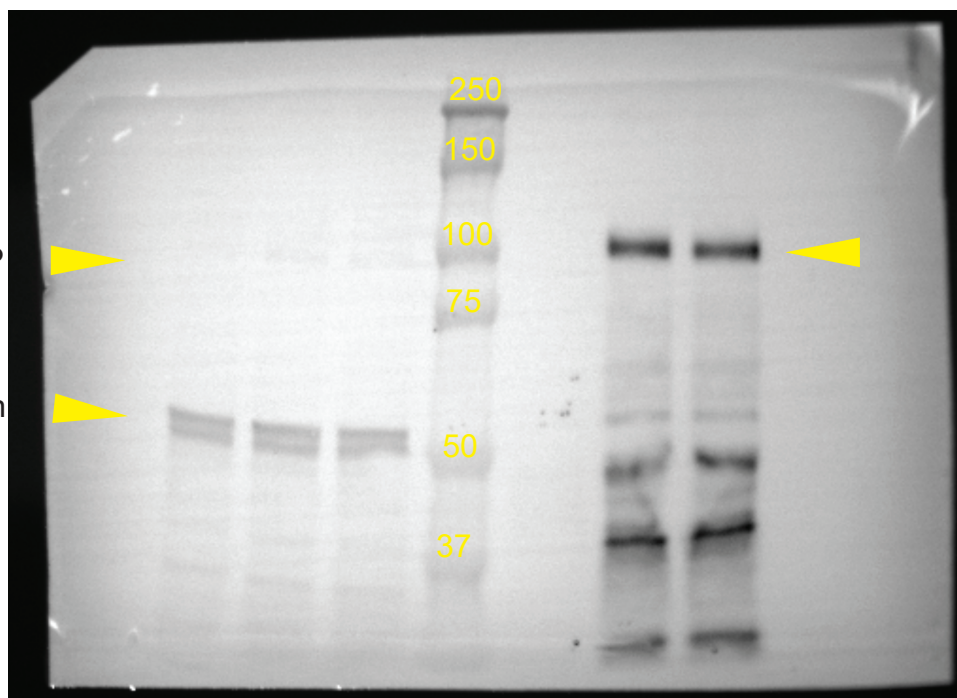
Sec3-GFP
Tubulin
(Not used in paper)



Input				IP			
+	-	+		+	-	+	Spn4-13Myc
-	+	+	*	-	+	+	Sec3-GFP

GFP blot

Sec3-GFP
Tubulin



Note: White illumination near the edges of the blots are unwanted reflection of liquid from membrane and does not appear in chemiluminisence channel.

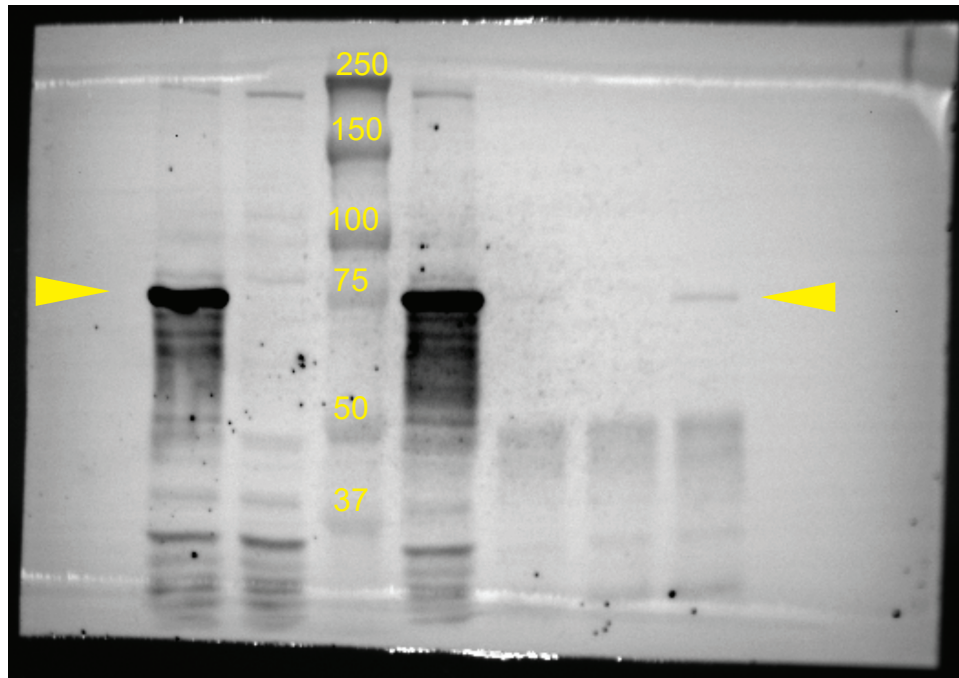
**Figure 4-figure supplement 1
panel H labeled**

* Protein marker

Input				IP			
+	-		+	+	-	+	Spn4-13Myc
-	+	*	+	-	+	+	Sec3-GFP

Myc blot

Spn4-13Myc



Note: White illumination near the edges of the blots are unwanted reflection of liquid from membrane and does not appear in chemiluminisence channel.